



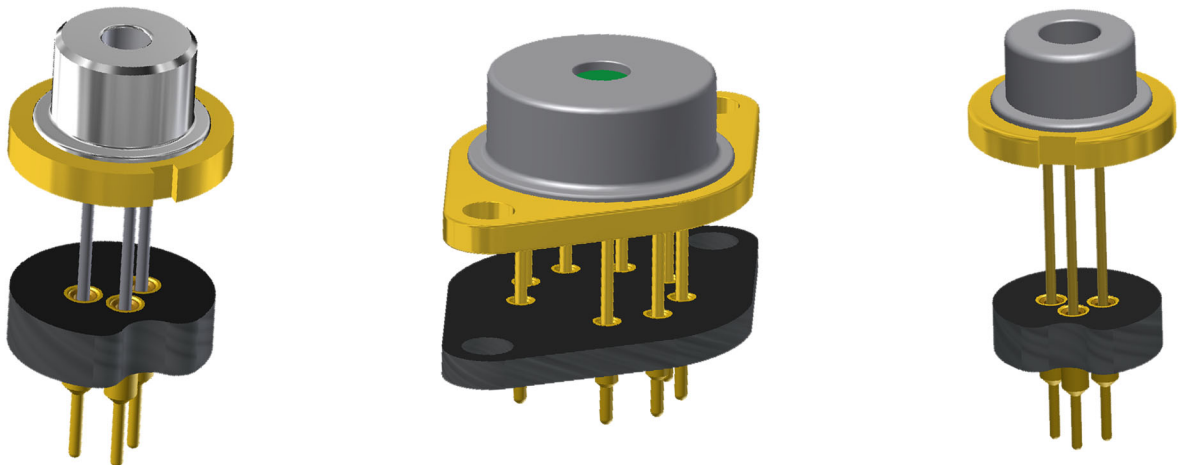
ANDON
INTERCONNECTION SPECIALISTS



RoHS Compliant
ISO 9001
Certified

OPTOELECTRONIC SOCKETS FOR

Arima
LASERS



***Largest Line of High Reliability Sensor Sockets
with Andon's Unique Senstac™ Contact***

www.andonelect.com or www.andonelectronics.com

Arima Laser. is a Copyright © of



ARIMA LASER						
ARIMA LASER Model Number	Andon Part Number Replace "XXX" with Terminal Type	Terminal Type		Pin Ø [in]	Figure Number	Page Number
		Thru-Hole	Surface Mount			
N PACKAGE	R100-0403-04N-XXX-R27-L14	75S	265S	.018	2	2
S PACKAGE	R050-0403-01N-XXX-R27-L14	437T	329T	.010	1	2
T & G PACKAGE	R079-0402-01T-XXX-R27-L14	274K	281K	.018	4	2
ADL-63V0ANP	R100-0403-04N-XXX-R27-L14	75S	265S	.018	2	2
ADL-63T01NP	R100-0403-04N-XXX-R27-L14	75S	265S	.018	2	2
ADL-63T01NY	R100-0403-04N-XXX-R27-L14	75S	265S	.018	2	2
ADL-63054TL	R080-0403-01N-XXX-R27-L14	274K	281K	.018	3	2
ADL-63059TU	R080-0403-01N-XXX-R27-L14	274K	281K	.018	3	2
ADL-63202TL	R080-0403-01N-XXX-R27-L14	274K	281K	.018	3	2
ADX-6305STB2	R080-0403-01N-XXX-R27-L14	274K	281K	.018	3	2
ADX-6305STL-5	R080-0403-01N-XXX-R27-L14	274K	281K	.018	3	2
ADL-65075TL	R080-0403-01N-XXX-R27-L14	274K	281K	.018	3	2
ADL-65075TU-1	R080-0403-01N-XXX-R27-L14	274K	281K	.018	3	2
ADL-65075TA2	R080-0403-01N-XXX-R27-L14	274K	281K	.018	3	2
ADL-65103TL	R080-0403-01N-XXX-R27-L14	274K	281K	.018	3	2
ADL-63102TL-3	R080-0403-01N-XXX-R27-L14	274K	281K	.018	3	2
ADL-63153TL	R080-0403-01N-XXX-R27-L14	274K	281K	.018	3	2
ADL-65078TU-1	R080-0403-01N-XXX-R27-L14	274K	281K	.018	3	2
ADL-65052TL	R080-0403-01N-XXX-R27-L14	274K	281K	.018	3	2
ADL-65074TL-1	R080-0403-01N-XXX-R27-L14	274K	281K	.018	3	2
ADL-65104TR	R080-0403-01N-XXX-R27-L14	274K	281K	.018	3	2
ADL-66505TL/U	R080-0403-01N-XXX-R27-L14	274K	281K	.018	3	2
ADL-78051TL	R080-0403-01N-XXX-R27-L14	274K	281K	.018	3	2
ADL-63302TL	R080-0403-01N-XXX-R27-L14	274K	281K	.018	3	2
ADL-63V07CZ	R080-0403-01N-XXX-R27-L14	274K	281K	.018	3	2
ADL-63X51CZ	R080-0403-01N-XXX-R27-L14	274K	281K	.018	3	2
ADL-63V0BTY	R080-0403-01N-XXX-R27-L14	274K	281K	.018	3	2
ADL-65102TB2	R080-0403-01N-XXX-R27-L14	274K	281K	.018	3	2
ADL-65102TA2	R080-0403-01N-XXX-R27-L14	274K	281K	.018	3	2
ADL-78101TL	R080-0403-01N-XXX-R27-L14	274K	281K	.018	3	2
ADL-80V03TZ	R080-0403-01N-XXX-R27-L14	274K	281K	.018	3	2
ADL-80X01TZ	R080-0403-01N-XXX-R27-L14	274K	281K	.018	3	2
ADL-80Y04TZ	R080-0403-01N-XXX-R27-L14	274K	281K	.018	3	2
ADL-80Y05TZ	R080-0403-01N-XXX-R27-L14	274K	281K	.018	3	2
ADL-83Z01TL	R080-0403-01N-XXX-R27-L14	274K	281K	.018	3	2
ADL-85051TL	R080-0403-01N-XXX-R27-L14	274K	281K	.018	3	2
ADL-85301TL	R080-0403-01N-XXX-R27-L14	274K	281K	.018	3	2
ADL-65053TL-2	R080-0403-01N-XXX-R27-L14	274K	281K	.018	3	2
ADL-65055TL	R080-0403-01N-XXX-R27-L14	274K	281K	.018	3	2
ADL-85501TL	R080-0403-01N-XXX-R27-L14	274K	281K	.018	3	2
ADL-65075TL	R080-0403-01N-XXX-R27-L14	274K	281K	.018	3	2
ADL-63059TU	R080-0403-01N-XXX-R27-L14	274K	281K	.018	3	2
ADL-65075GR	R080-0403-01N-XXX-R27-L14	274K	281K	.018	3	2
ADL-65074GL	R080-0403-01N-XXX-R27-L14	274K	281K	.018	3	2
ADL-65052GA2	R080-0403-01N-XXX-R27-L14	274K	281K	.018	3	2
ADL-65055GL	R080-0403-01N-XXX-R27-L14	274K	281K	.018	3	2
ADL-65055GA2	R080-0403-01N-XXX-R27-L14	274K	281K	.018	3	2
ADL-65055SA2	R080-0403-01N-XXX-R27-L14	274K	281K	.018	3	2
ADL-63054SL	R050-0403-01N-XXX-R27-L14	437T	329T	.010	1	2
ADL-6305ESB2	R050-0403-01N-XXX-R27-L14	437T	329T	.010	1	2
ADL-65075SA2	R050-0403-01N-XXX-R27-L14	437T	329T	.010	1	2
ADL-65075SL	R050-0403-01N-XXX-R27-L14	437T	329T	.010	1	2
ADL-65077SU	R050-0403-01N-XXX-R27-L14	437T	329T	.010	1	2
ADL-65055SA2	R050-0403-01N-XXX-R27-L14	437T	329T	.010	1	2
ADL-65052SL	R050-0403-01N-XXX-R27-L14	437T	329T	.010	1	2

ARIMA LASER Continued
Socket Terminal Details
Cross Section View Shown Units: in [mm]

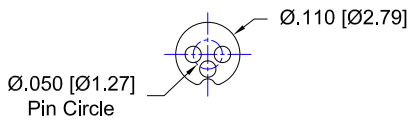


FIG: 01
Thru-Hole: R050-0403-01N-437T-R27-L14
Surface Mount: R050-0403-01N-329T-R27-L14

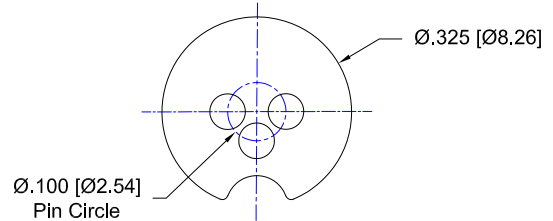


FIG: 02
Thru-Hole: R100-0403-04N-75S-R27-L14
Surface Mount: R100-0403-04N-265S-R27-L14

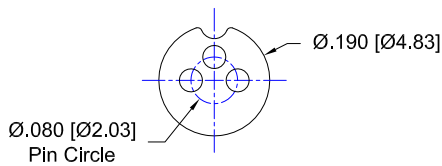


FIG: 03
Thru-Hole: R080-0403-01N-274K-R27-L14
Surface Mount: R080-0403-01N-281K-R27-L14

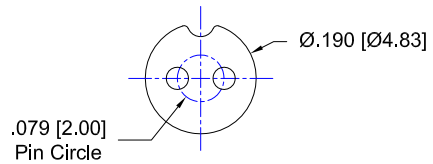
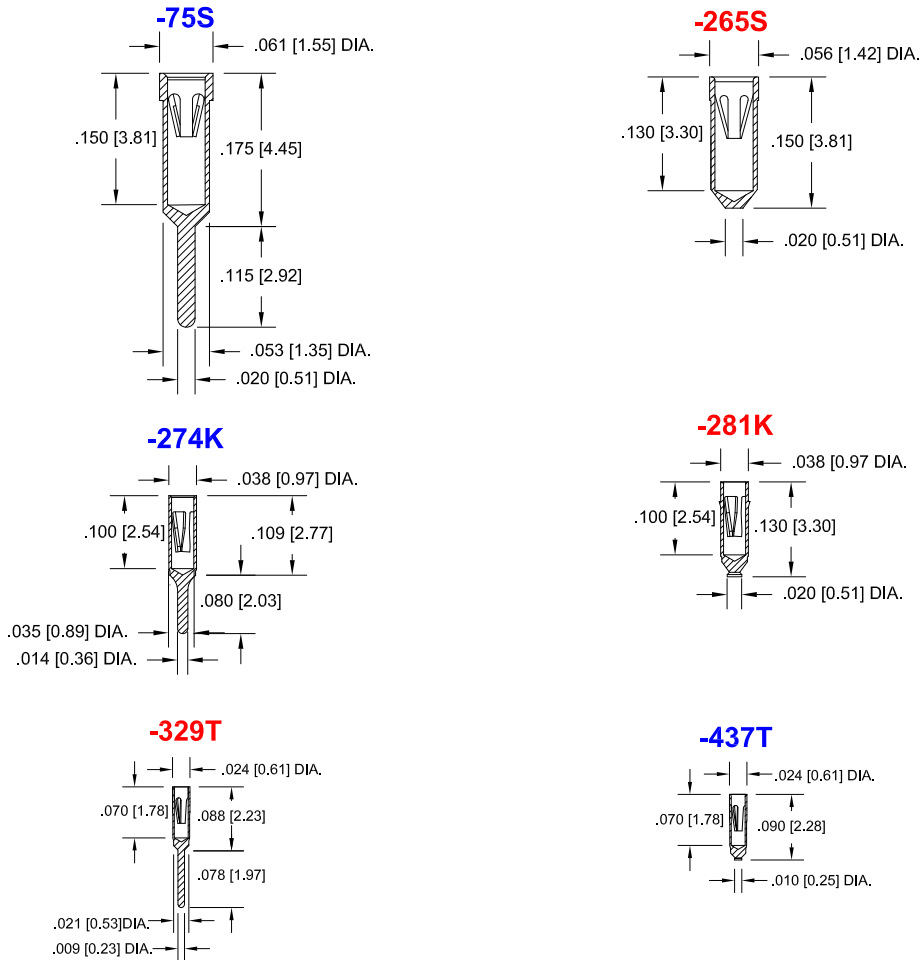


FIG: 04
Thru-Hole: R079-0402-01T-274K-R27-L14
Surface Mount: R079-0402-01T-281K-R27-L14

ARIMA LASER *Continued*

Socket Terminal Details

Cross Section View Shown Units: in [mm]



Technical Information

Material:

Insulator: Hi-Temp UL 94V-O
 Terminal: Brass, per ASTM-B16
 Contact: BeCu, Per ASTM-B194

Plating: RoHS COMPLIANT

R15 TERMINAL: GOLD / CONTACT: GOLD

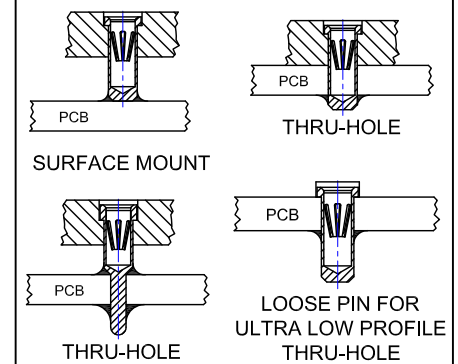
R17 TERMINAL: TIN / CONTACT: GOLD

OTHER PLATINGS AVAILABLE

Terminal Acceptance and Forces

Thru Hole Terminals				Surface Mount Terminals			
Thru Hole Terminal	Accepts Pin Diameter	Insertion Force	Withdrawal Force	Surface Mount Terminal	Accepts Pin Diameter	Insertion Force	Withdrawal Force
-437T	Ø.010 [Ø0.25]	1.0 oz Avg.	0.3 oz Min	-329T	Ø.010 [Ø0.25]	1.0 oz Avg.	0.3 oz Min
-274K	Ø.018 [Ø0.46]	1.0 oz Avg.	0.5 oz Min	-281K	Ø.018 [Ø0.46]	1.0 oz Avg.	0.5 oz Min
-75S	Ø.018 [Ø0.46]	9.0 oz Avg.	2.0 oz Min	-265S	Ø.018 [Ø0.46]	9.0 oz Avg.	2.0 oz Min

MOUNTING OPTIONS



©Copyright 2015 Andon Electronics Corporation. All Rights Reserved. This material is protected under US and other copyrights and may not be copied, sold, or redistributed in any form without written permission of Andon Electronics Corporation. Copyrights and trademarks are property of their respective companies. We reserve the right to change specifications without notice. Andon makes no warranty, expressed or implied, as to the suitability of the sockets for the intended purpose.

"ANDON PROPRIETARY INFORMATION"

RoHS Compliant

*Sockets are not drawn to scale ARIMA LASER 4/16/2015