

ADVANCED PHOTONIX, INC. (API)

Advanced Photonix, Inc (API) Model Number	Andon Part Number Replace "XXX" with Terminal Type	Terminal Type		Pin Ø [in]	Figure Number	Page Number
		Thru-Hole	Surface Mount			
PDB-C107	R265-SP02-01-XXX-R15-L14	01S	93S	.018	1	3
PDB-C109	R295-0402-02T-XXX-R15-L14	01S	93S	.018	2	3
PDB-C110	IS229-48402-XXX-R29-L14	01S	93S	.018	3	3
PDB-C134	R100-0402-06T-XXX-R15-L14	75S	265S	.018	4	3
PDB-C134F	R100-0402-06T-XXX-R15-L14	75S	265S	.018	4	3
PDB-C139	R100-0402-06T-XXX-R15-L14	75S	265S	.018	4	3
PDB-C139F	R100-0402-06T-XXX-R15-L14	75S	265S	.018	4	3
PDB-C142	R100-0402-06T-XXX-R15-L14	75S	265S	.018	4	3
PDB-C142F	R100-0402-06T-XXX-R15-L14	75S	265S	.018	4	3
PDB-C156	R100-0402-06T-XXX-R15-L14	75S	265S	.018	4	3
PDB-C156F	R100-0402-06T-XXX-R15-L14	75S	265S	.018	4	3
PDB-C157	R100-0402-06T-XXX-R15-L14	75S	265S	.018	4	3
PDB-C158	R100-0402-06T-XXX-R15-L14	75S	265S	.018	4	3
PDB-C158F	R100-0402-06T-XXX-R15-L14	75S	265S	.018	4	3
PDB-C168	R100-0402-06T-XXX-R15-L14	75S	265S	.018	4	3
PDB-C169	R100-0402-06T-XXX-R15-L14	75S	265S	.018	4	3
PDB-C170	R100-0402-06T-XXX-R15-L14	75S	265S	.018	4	3
PDB-C201	R200-0403-03T-XXX-R15-L14	01S	93S	.018	5	3
PDB-C203	R200-0805-01T-XXX-R15-L14	75S	265S	.018	6	3
PDB-C216	IS229-318-XXX-R29-L14	01S	93S	.018	7	4
PDB-C232	IS229-634-XXX-R29-L14	01S	93S	.018	8	4
PDB-V104	R100-0402-06T-XXX-R15-L14	75S	265S	.018	4	3
PDB-V107	R265-SP02-01-XXX-R15-L14	01S	93S	.018	1	3
PDB-V110	IS229-48402-XXX-R29-L14	01S	93S	.018	3	3
PDB-V113	R200-SP02-01-XXX-R15-L14	75S	265S	.018	9	4
PDB-V114	R200-0402-02T-XXX-R15-L14	01S	93S	.018	10	4
PDI-E801	R100-0402-06T-XXX-R15-L14	75S	265S	.018	4	3
PDI-E802	R100-0402-06T-XXX-R15-L14	75S	265S	.018	4	3
PDI-E803	R100-0402-06T-XXX-R15-L14	75S	265S	.018	4	3
PDI-E804	R100-0402-06T-XXX-R15-L14	75S	265S	.018	4	3
PDI-E805	R100-0402-06T-XXX-R15-L14	75S	265S	.018	4	3
PDI-E808-A	R100-0402-06T-XXX-R15-L14	75S	265S	.018	4	3
PDI-E809	R100-0402-06T-XXX-R15-L14	75S	265S	.018	4	3
PDI-E813	R100-0402-06T-XXX-R15-L14	75S	265S	.018	4	3
PDI-E825	R100-0402-06T-XXX-R15-L14	75S	265S	.018	4	3
PDU-G101A	R100-0402-06T-XXX-R15-L14	75S	265S	.018	4	3
PDU-G102B	R100-0402-06T-XXX-R15-L14	75S	265S	.018	4	3
PDU-V104	R100-0402-06T-XXX-R15-L14	75S	265S	.018	4	3
PDU-V114	R100-0402-06T-XXX-R15-L14	75S	265S	.018	4	3
PDV-P5001	R300-SP02-01-XXX-R15-L14	01S	93S	.018	11	4
PDV-P5002	R300-SP02-01-XXX-R15-L14	01S	93S	.018	11	4
PDV-P5003	R300-SP02-01-XXX-R15-L14	01S	93S	.018	11	4
PDV-P7002	R200-SP02-01-XXX-R15-L14	75S	265S	.018	9	4
PDV-P8001	R134-SP02-01-XXX-R15-L14	274K	281K	.018	12	4
PDV-P8005	R134-SP02-01-XXX-R15-L14	274K	281K	.018	12	4
PDV-P8101	R134-SP02-01-XXX-R15-L14	274K	281K	.018	12	4
PDV-P8102	R134-SP02-01-XXX-R15-L14	274K	281K	.018	12	4
PDV-P8103	R134-SP02-01-XXX-R15-L14	274K	281K	.018	12	4
PDV-P8104	R134-SP02-01-XXX-R15-L14	274K	281K	.018	12	4
PDV-P8105	R134-SP02-01-XXX-R15-L14	274K	281K	.018	12	4
PDV-P8107	R134-SP02-01-XXX-R15-L14	274K	281K	.018	12	4
PDV-P9001	R100-SP02-01-XXX-R15-L14	274K	281K	.018	13	4
PDV-P9002	R100-SP02-01-XXX-R15-L14	274K	281K	.018	13	4
PDV-P9002-1	R100-SP02-01-XXX-R15-L14	274K	281K	.018	13	4
PDV-P9003	R100-SP02-01-XXX-R15-L14	274K	281K	.018	13	4

ADVANCED PHOTONIX, INC. (API) <i>continued</i>						
Advanced Photonix, Inc (API) Model Number	Andon Part Number Replace "XXX" with Terminal Type	Terminal Type		Pin Ø [in]	Figure Number	Page Number
		Thru-Hole	Surface			
PDV-P9003-1	R100-SP02-01-XXX-R15-L14	274K	281K	.018	13	4
PDV-P9004	R100-SP02-01-XXX-R15-L14	274K	281K	.018	13	4
PDV-P9005	R100-SP02-01-XXX-R15-L14	274K	281K	.018	13	4
PDV-P9005-1	R100-SP02-01-XXX-R15-L14	274K	281K	.018	13	4
PDV-P9006	R100-SP02-01-XXX-R15-L14	274K	281K	.018	13	4
PDV-P9007	R100-SP02-01-XXX-R15-L14	274K	281K	.018	13	4
PDV-P9008	R100-SP02-01-XXX-R15-L14	274K	281K	.018	13	4
PDV-P9103	R100-SP02-01-XXX-R15-L14	274K	281K	.018	13	4
PDV-P9200	R100-SP02-01-XXX-R15-L14	274K	281K	.018	13	4
PDV-P9203	R100-SP02-01-XXX-R15-L14	274K	281K	.018	13	4
SD 004-11-41-211	R100-0404-03T-XXX-R15-L14	75S	265S	.018	14	5
SD 008-11-41-211	R100-0403-05T-XXX-R15-L14	75S	265S	.018	15	5
SD 012-11-41-211	R100-0403-05T-XXX-R15-L14	75S	265S	.018	15	5
SD 012-70-62-541	R100-0403-05T-XXX-R15-L14	75S	265S	.018	15	5
SD 036-70-62-531	R100-0403-05T-XXX-R15-L14	75S	265S	.018	15	5
SD 041-11-33-211	R100-0403-05T-XXX-R15-L14	75S	265S	.018	15	5
SD 055-23-21-211	R100-0806-01T-XXX-R15-L14	C2		.018	16	5
SD 057-11-21-011	R100-0402-06T-XXX-R15-L14	75S	265S	.018	4	3
SD 057-14-21-011	R100-0402-06T-XXX-R15-L14	75S	265S	.018	4	3
SD 060-11-41-211	R200-0403-03T-XXX-R15-L14	01S	93S	.018	5	3
SD 066-24-21-011	R100-0403-05T-XXX-R15-L14	75S	265S	.018	15	5
SD 076-11-31-211	R100-0403-05T-XXX-R15-L14	75S	265S	.018	15	5
SD 076-14-21-011	R100-0402-06T-XXX-R15-L14	75S	265S	.018	4	3
SD 085-23-21-021	R200-0805-01T-XXX-R15-L14	75S	265S	.018	6	3
SD 100-11-21-221	R200-0403-03T-XXX-R15-L14	01S	93S	.018	5	3
SD 100-11-31-221	R200-0403-03T-XXX-R15-L14	01S	93S	.018	5	3
SD 100-12-22-021	R200-0403-03T-XXX-R15-L14	01S	93S	.018	5	3
SD 100-13-23-022	R200-0403-03T-XXX-R15-L14	01S	93S	.018	5	3
SD 100-14-21-021	R200-0403-03T-XXX-R15-L14	01S	93S	.018	5	3
SD 100-41-21-231	R235-0808-01T-XXX-R15-L14	75S	265S	.018	17	5
SD 100-42-22-231	R235-0808-01T-XXX-R15-L14	75S	265S	.018	17	5
SD 100-43-23-232	R235-0808-01T-XXX-R15-L14	75S	265S	.018	17	5
SD 112-42-11-221	R200-0404-02T-XXX-R15-L14	01S	93S	.018	18	5
SD 112-43-11-221	R200-0404-02T-XXX-R15-L14	01S	93S	.018	18	5
SD 112-45-11-221	R200-0404-02T-XXX-R15-L14	01S	93S	.018	18	5
SD 113-24-21-021	R200-0403-03T-XXX-R15-L14	01S	93S	.018	5	3
SD 118-23-21-021	R200-0805-01T-XXX-R15-L14	75S	265S	.018	6	3
SD 160-24-21-021	R200-0403-03T-XXX-R15-L14	01S	93S	.018	5	3
SD 172-11-21-221	R200-0403-03T-XXX-R15-L14	01S	93S	.018	5	3
SD 172-14-21-021	R200-0403-03T-XXX-R15-L14	01S	93S	.018	5	3
SD 197-23-21-041	R300-SP05-02T-XXX-R15-L14	01S	93S	.018	19	5
SD 197-70-72-591	F428-1007-01-XXX-R15-L14	295V	439V	.030	20	5
SD 197-70-74-591	F428-1007-01-XXX-R15-L14	295V	439V	.030	20	5
SD 200-11-21-241	R300-0803-03N-XXX-R15-L14	01S	93S	.018	21	6
SD 200-11-31-241	R300-0803-03N-XXX-R15-L14	01S	93S	.018	21	6
SD 200-12-22-041	R300-0803-03N-XXX-R15-L14	01S	93S	.018	21	6
SD 200-12-22-241	R300-0803-03N-XXX-R15-L14	01S	93S	.018	21	6
SD 200-13-23-042	R300-0803-03N-XXX-R15-L14	01S	93S	.018	21	6
SD 200-13-23-242	R300-0803-03N-XXX-R15-L14	01S	93S	.018	21	6
SD 219-51-03-301	IS229-314-XXX-R29-L14	01S	93S	.018	22	6
SD 225-23-21-040	R300-SP05-02T-XXX-R15-L14	01S	93S	.018	19	5
SD 290-11-31-241	R300-0803-03N-XXX-R15-L14	01S	93S	.018	21	6
SD 290-12-22-241	R300-0803-03N-XXX-R15-L14	01S	93S	.018	21	6
SD 380-23-21-051	R730-0806-01T-XXX-R15-L14	01S	93S	.018	23	6
SD 380-23-21-251	R730-0806-01T-XXX-R15-L14	01S	93S	.018	23	6
SD 394-70-72-591	F700-SP07-01-XXX-R15-L14	295V	439V	.030	24	6

ADVANCED PHOTONIX, INC. (API) continued							
Advanced Photonix, Inc (API) Model Number	Andon Part Number Replace "XXX" with Terminal Type	Terminal Type		Pin Ø [in]	Figure Number	Page Number	
		Thru-Hole	Surface				
SD 394-70-74-591	F700-SP07-01-XXX-R15-L14	295V	439V	.030	24	6	
SD 444-41-21-261	R735-0808-01-XXX-R15-L14	01S	93S	.018	25	6	
SD 444-42-22-261	R735-0808-01-XXX-R15-L14	01S	93S	.018	25	6	
SD 444-43-23-262	R735-0808-01-XXX-R15-L14	01S	93S	.018	25	6	
SD 445-11-21-305	IS229-49202-XXX-R29-L14	01S	93S	.018	26	6	
SD 445-14-21-305	IS229-49202-XXX-R29-L14	01S	93S	.018	26	6	
SD 551-23-41-221	R730-0807-02T-XXX-R15-L14	01S	93S	.018	27	6	

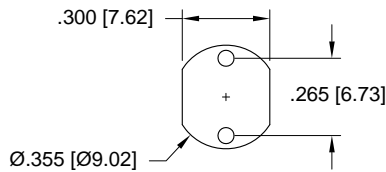


Fig 1

Thru-Hole: R265-SP02-01-01S-R15-L14
Surface Mount: R265-SP02-01-93S-R15-L14

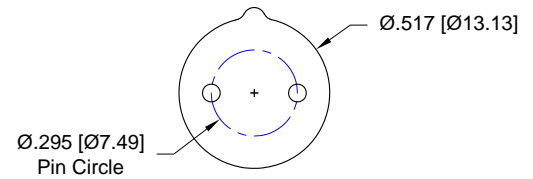


Fig 2

Thru-Hole: R295-0402-02T-01S-R15-L14
Surface Mount: R295-0402-02T-93S-R15-L14

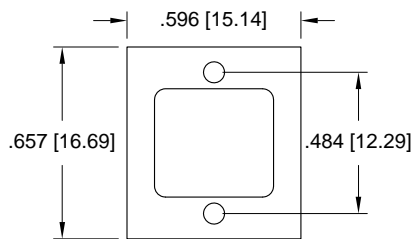


Fig 3

Thru-Hole: IS229-48402-01S-R29-L14
Surface Mount: IS229-48402-93S-R29-L14

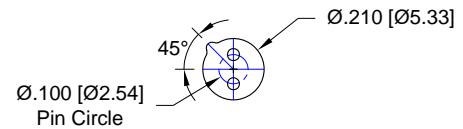


Fig 4

Thru-Hole: R100-0402-06T-75S-R15-L14
Surface Mount: R100-0402-06T-265S-R15-L14

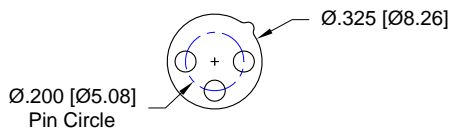


Fig 5

Thru-Hole: R200-0403-03T-01S-R15-L14
Surface Mount: R200-0403-03T-93S-R15-L14

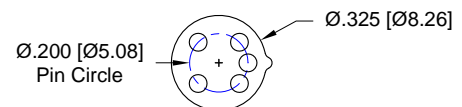


Fig 6

Thru-Hole: R200-0805-01T-75S-R15-L14
Surface Mount: R200-0805-01T-265S-R15-L14

Advanced Photonix, Inc. (API) Continued

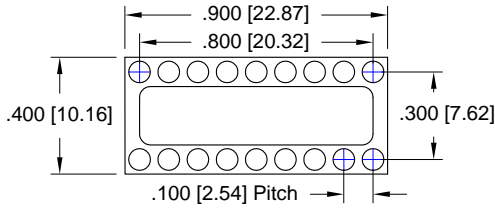


Fig 7

Thru-Hole: IS229-318-01S-R29-L14
Surface Mount: IS229-318-93S-R29-L14

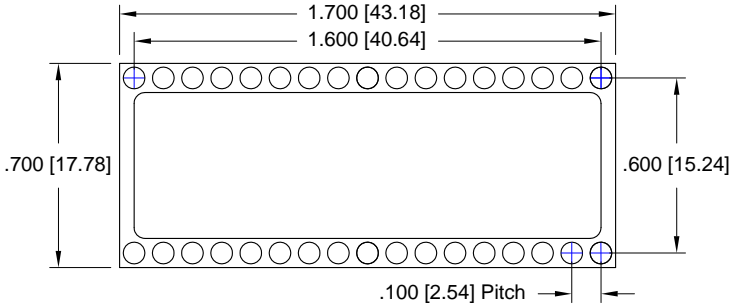
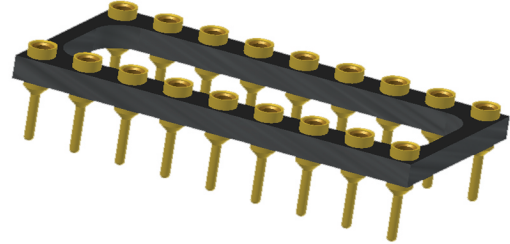


Fig 8

Thru-Hole: IS229-634-01S-R29-L14
Surface Mount: IS229-634-93S-R29-L14

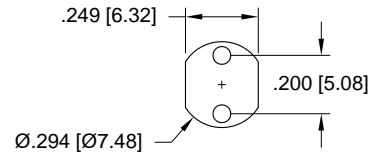


Fig 9

Thru-Hole: R200-SP02-01-75S-R15-L14
Surface Mount: R200-SP02-01-265S-R15-L14

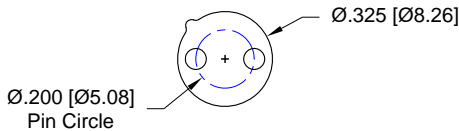


Fig 10

Thru-Hole: R200-0402-02T-01S-R15-L14
Surface Mount: R200-0402-02T-93S-R15-L14

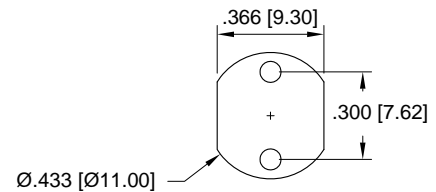


Fig 11

Thru-Hole: R300-SP02-01-01S-R15-L14
Surface Mount: R300-SP02-01-93S-R15-L14

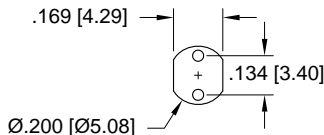


Fig 12

Thru-Hole: R134-SP02-01-274K-R29-L14
Surface Mount: R134-SP02-01-281K-R29-L14

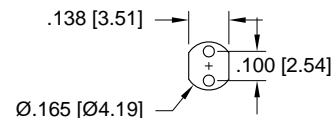


Fig 13

Thru-Hole: R100-SP02-01-274K-R29-L14
Surface Mount: R100-SP02-01-281K-R29-L14

Advanced Photonix, Inc. (API) Continued

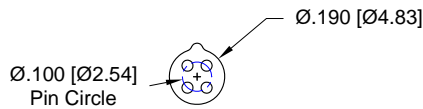


Fig 14

Thru-Hole: R100-0404-03T-75S-R15-L14
Surface Mount: R100-0404-03T-265S-R15-L14

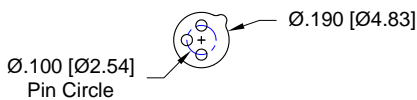
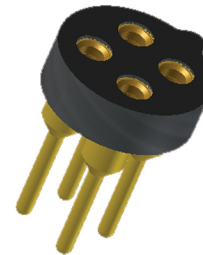


Fig 15

Thru-Hole: R100-0403-05T-75S-R15-L14
Surface Mount: R100-0403-05T-265S-R15-L14

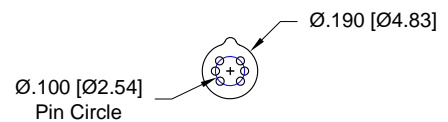


Fig 16

Thru-Hole: R100-0806-01T-C2-R15-L14

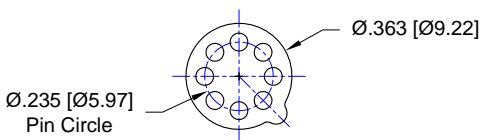


Fig 17

Thru-Hole: R235-0808-01T-75S-R15-L14
Surface Mount: R235-0808-01T-265S-R15-L14

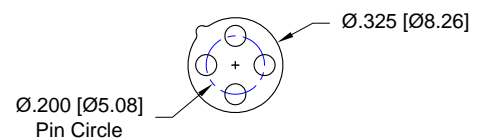


Fig 18

Thru-Hole: R200-0404-02T-01S-R15-L14
Surface Mount: R200-0404-02T-93S-R15-L14

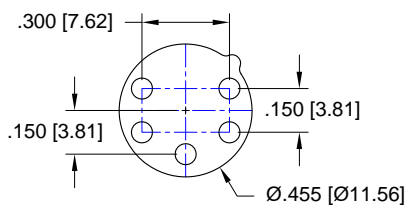


Fig 19

Thru-Hole: R300-SP05-02T-01S-R15-L14
Surface Mount: R300-SP05-02T-93S-R15-L14

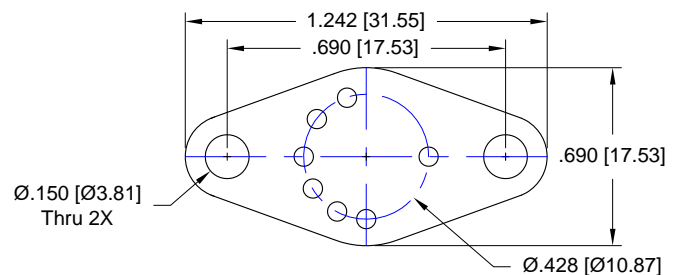


Fig 20

Thru-Hole: F428-1007-01-295V-R15-L14
Surface Mount: F428-1007-01-439V-R15-L14

Advanced Photonix, Inc. (API) Continued

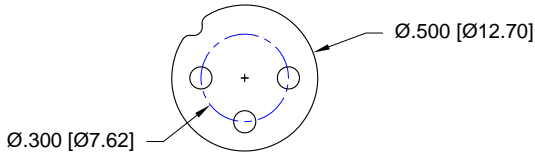


Fig 21

Thru-Hole: R300-0803-03N-01S-R15-L14
Surface Mount: R300-0803-03N-93S-R15-L14

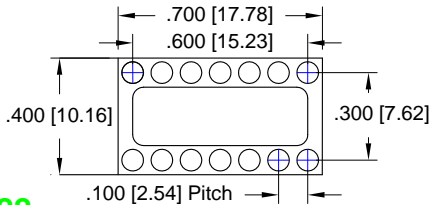
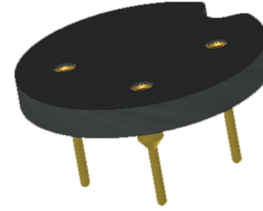


Fig 22

Thru-Hole: IS229-314-01S-R29-L14
Surface Mount: IS229-314-93S-R29-L14

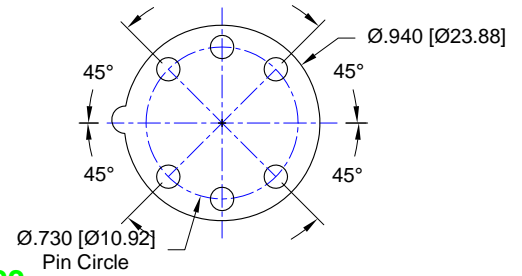


Fig 23

Thru-Hole: R730-0806-01T-01S-R15-L14
Surface Mount: R730-0806-01T-93S-R15-L14

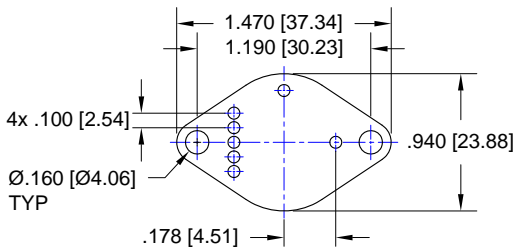


Fig 24

Thru-Hole: F700-SP07-01-295V-R15-L14
Surface Mount: F700-SP07-01-439V-R15-L14

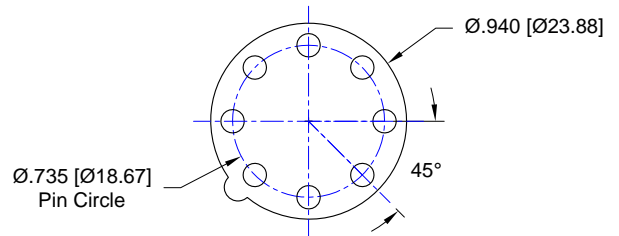


Fig 25

Thru-Hole: R735-0808-01T-01S-R15-L14
Surface Mount: R735-0808-01T-93S-R15-L14

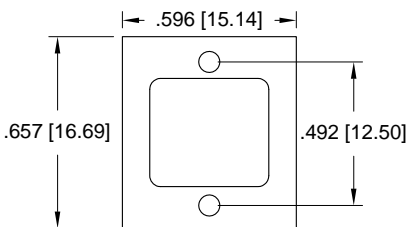


Fig 26

Thru-Hole: IS229-49202-01S-R29-L14
Surface Mount: IS229-49202-93S-R29-L14

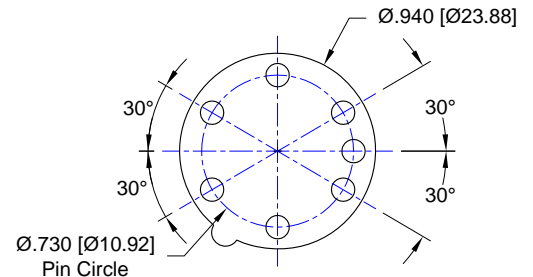
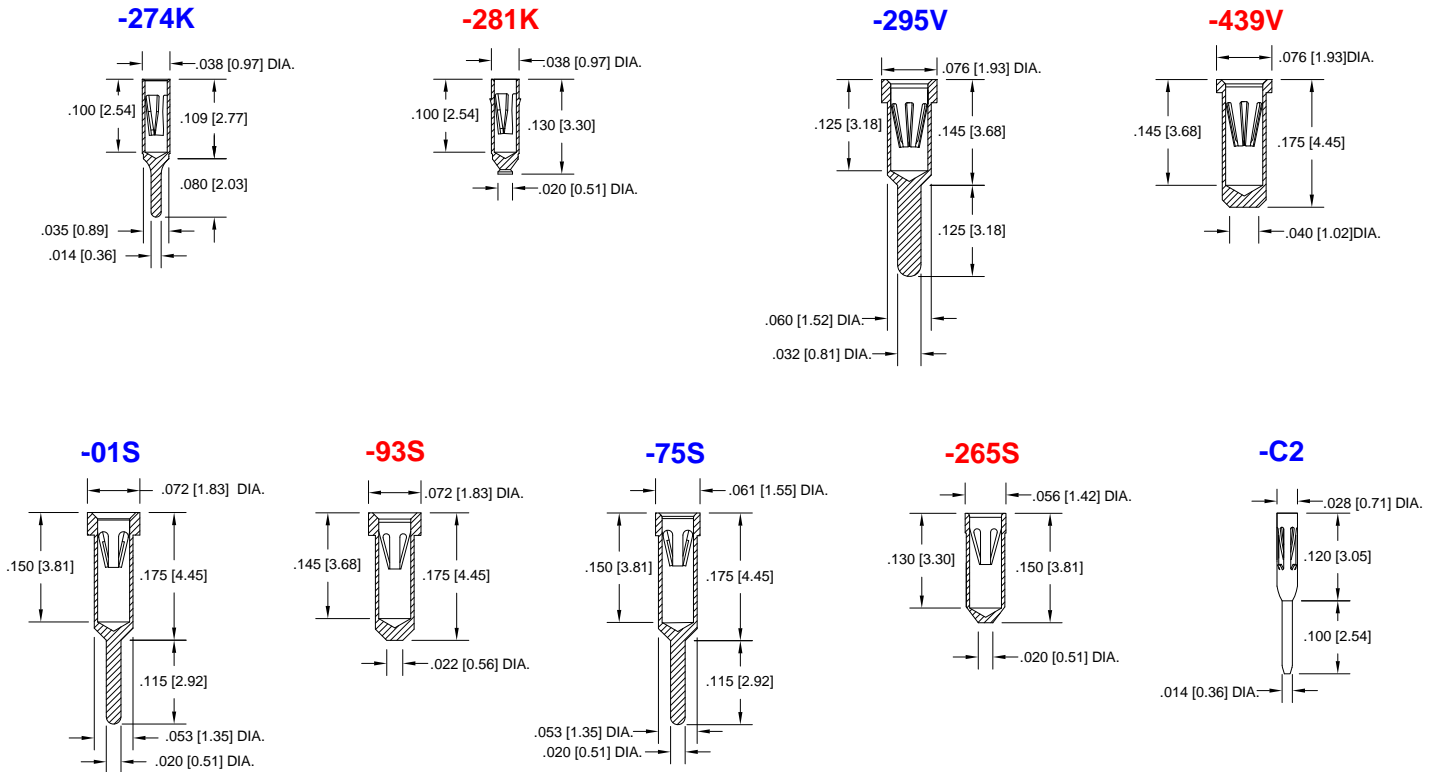


Fig 27

Thru-Hole: R730-0807-02T-01S-R15-L14
Surface Mount: R730-0807-02T-93S-R15-L14

Advanced Photonix, Inc. (API) Continued

Socket Terminal Details Cross Section View Shown Units: in [mm]



Technical Information

Material:

Insulator: Hi-Temp UL 94V-O
Terminal: Brass, per ASTM-B16
Contact: BeCu, Per ASTM-B194

Plating: RoHS COMPLIANT

R15 TERMINAL: GOLD / CONTACT: GOLD

R17 TERMINAL: TIN / CONTACT: GOLD

OTHER PLATINGS AVAILABLE

Terminal Acceptance and Forces

Thru Hole Terminals				Surface Mount Terminals			
Thru Hole Terminal	Accepts Pin Diameter	Insertion Force	Withdrawal Force	Surface Mount Terminal	Accepts Pin Diameter	Insertion Force	Withdrawal Force
-C2	Ø.018 [Ø0.46]	9.0 oz Avg.	2.0 oz Min	-93S	Ø.018 [Ø0.46]	9.0 oz Avg.	2.0 oz Min
-01S	Ø.018 [Ø0.46]	1.5 oz Max.	0.04 oz Min	-265S	Ø.018 [Ø0.46]	9.0 oz Avg.	2.0 oz Min
-75S	Ø.018 [Ø0.46]	9.0 oz Avg.	2.0 oz Min	-439V	Ø.030 [Ø0.76]	13.2 oz Max	3.5 oz Min
-295V	Ø.030 [Ø0.76]	13.2 oz Max	3.5 oz Min	-281K	Ø.018 [Ø0.46]	1.0 oz Max	0.5 oz Min
-274K	Ø.018 [Ø0.46]	1.0 oz Max	0.5 oz Min				

MOUNTING OPTIONS

