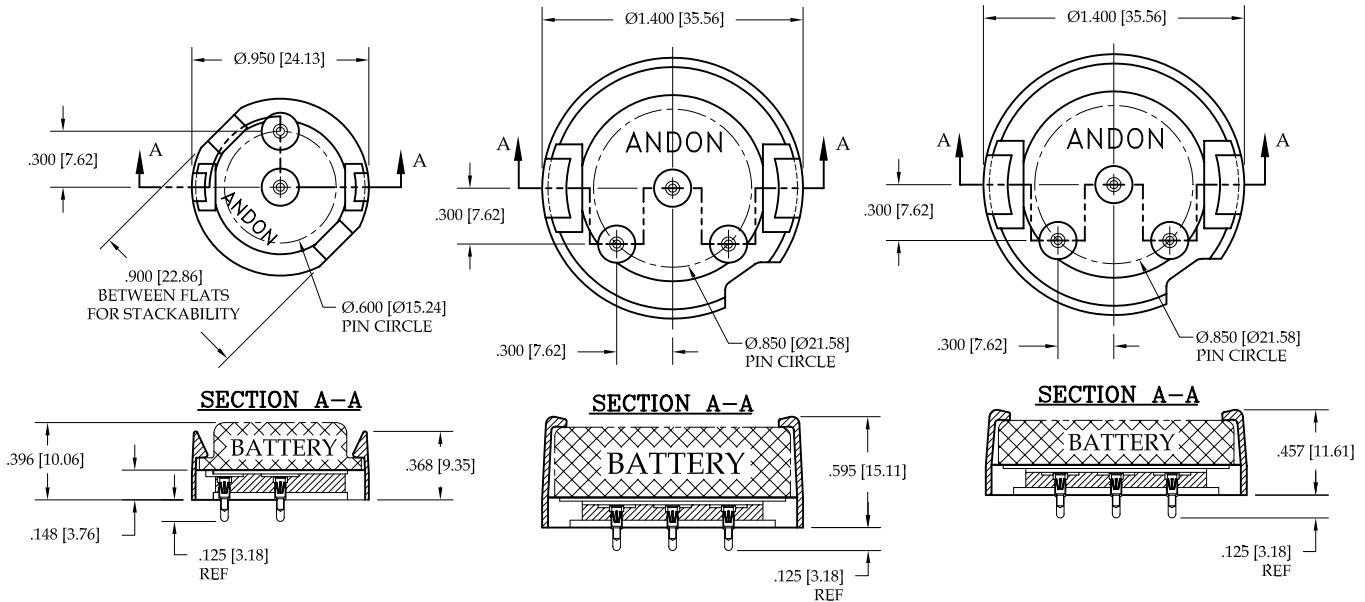


OmniCel Battery Sockets

RoHS COMPLIANT

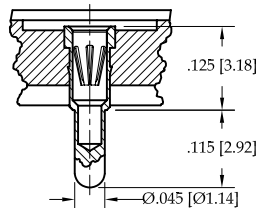


Andon Socket:
BS-5186-02-XXX-XXX-D14
(See below for plating/terminal options)
Batteries Accepted:
Omnicel ER22G68

Andon Socket:
BS-5135-03-XXX-XXX-D14
(See below for plating/terminal options)
Batteries Accepted:
Omnicel ER32L100

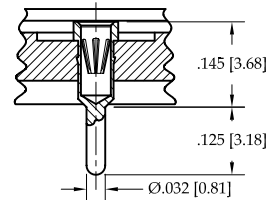
Andon Socket:
BS-5134-03-XXX-XXX-D14
(See below for plating/terminal options)
Batteries Accepted:
OmniCel ER32L65

-280V Socket Assembly



Mounting Hole Diameter: $\text{Ø} .055 [1.40] - \text{Ø} .065 [1.65]$
Accepts Battery Tail Length: $.135 [3.43] - .210 [5.33]$
Accepts Tail Diameter: $\text{Ø} .025 [0.64] - \text{Ø} .037 [0.94]$

-295V Socket Assembly



Mounting Hole Diameter: $\text{Ø} .042 [1.07] - \text{Ø} .052 [1.32]$
Accepts Battery Tail Length: $.115 [2.92] - .132 [3.35]$
Accepts Tail Diameter: $\text{Ø} .025 [0.64] - \text{Ø} .037 [0.94]$

Ordering Information

BS-XXXX-XX-XXXX-XXX-D14

Terminal Type
 -280V (Fig. 4)
 or -295V (Fig. 5)

Plating:
 -P27 : Gold Terminal, Gold Contact
 -P32 : Tin-Lead Terminal, Tin Contact

RoHS Compliant Plating:

-R27 : Gold Terminal, Gold Contact
 -R32 : Tin Terminal, Tin Contact