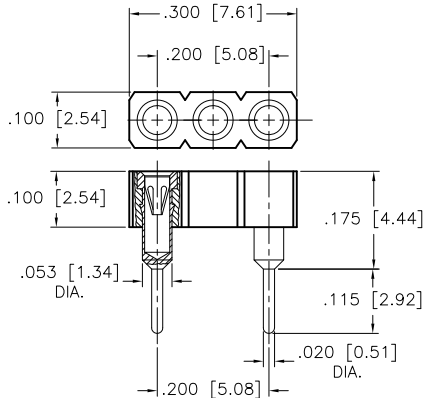


FUSE SOCKETS

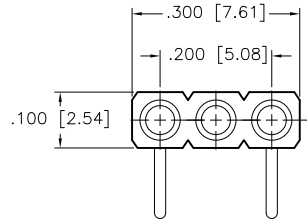
ISO 9001
CERTIFIED

LEAD FREE AVAILABLE

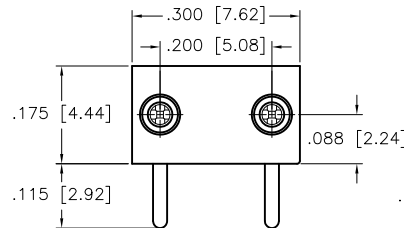
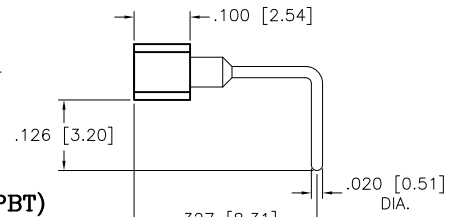
TIN-LEAD AND LEAD FREE
QUICK AND EASY FUSE REPLACEMENT
WITHOUT POST SOLDERING / DESOLDERING



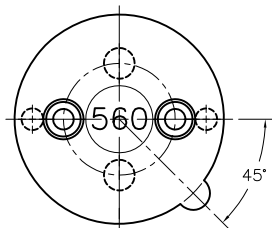
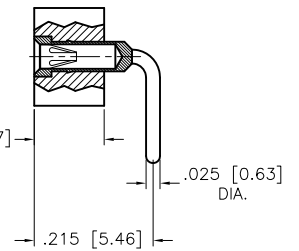
303-00556-01S-P29-S10 (NYLON 46)
(THRU HOLE)



303-00556-366H-P31-B10 (PBT)
(RIGHT ANGLE) -S10 (NYLON 46)

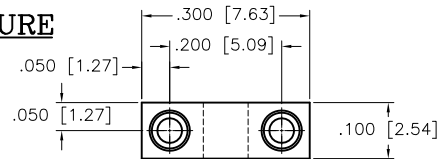


302-00580-346S-P31-S10 (NYLON 46)
(RIGHT ANGLE)

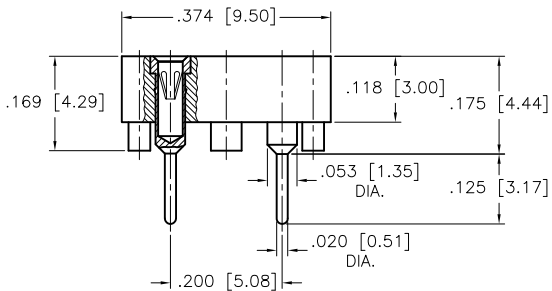


560-02-229S-P31-S18 (NYLON 46)
(THRU HOLE)

HIGH TEMPERATURE
NYLON 46



302-00567-93S-P31-S10 (NYLON 46)
(SURFACE MOUNT)



560-02-93S-P31-S18 (NYLON 46)
(SURFACE MOUNT)

TECHNICAL SPECIFICATIONS

MATERIAL

INSULATOR: B10: PBT GLASS FILLED, UL 94V-0

S10 AND S18: HIGH TEMP. NYLON 46

GLASS FILLED, UL 94V-0

TERMINAL: BRASS, TIN-LEAD PLATED

CONTACT: BeCu, GOLD PLATED

TERMINAL: BRASS, TIN PLATED

CONTACT: BeCu, GOLD PLATED

* OTHER PLATINGS AVAILABLE

P31 AND P29 = TIN-LEAD *
R31 = LEAD FREE *
R29 = PLATING *

DIMENSIONS ARE SHOWN IN INCHES [MILLIMETERS]

© COPYRIGHT 2009 ANDON ELECTRONICS CORPORATION. ALL RIGHTS RESERVED. THIS MATERIAL IS PROTECTED UNDER US AND OTHER COPYRIGHTS AND MAY NOT BE COPIED, SOLD, OR REDISTRIBUTED IN ANY FORM WITHOUT WRITTEN PERMISSION OF ANDON ELECTRONICS CORPORATION. COPYRIGHTS AND TRADEMARKS ARE PROPERTY OF THEIR RESPECTIVE COMPANIES. WE RESERVE THE RIGHT TO CHANGE SPECIFICATIONS WITHOUT NOTICE. ANDON MAKES NO WARRANTY, EXPRESSED OR IMPLIED, AS TO THE SUITABILITY OF THE SOCKETS FOR THE INTENDED PURPOSE.

FUSESKT-DS
10-09-13