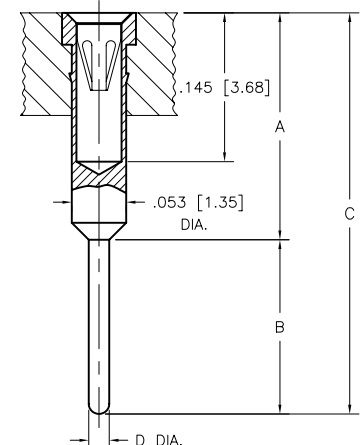
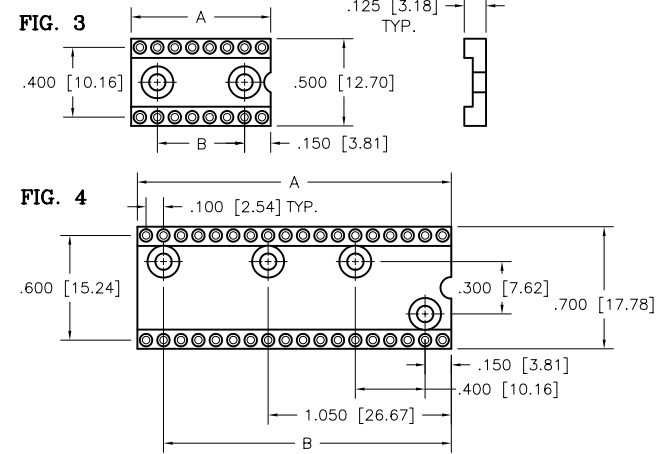
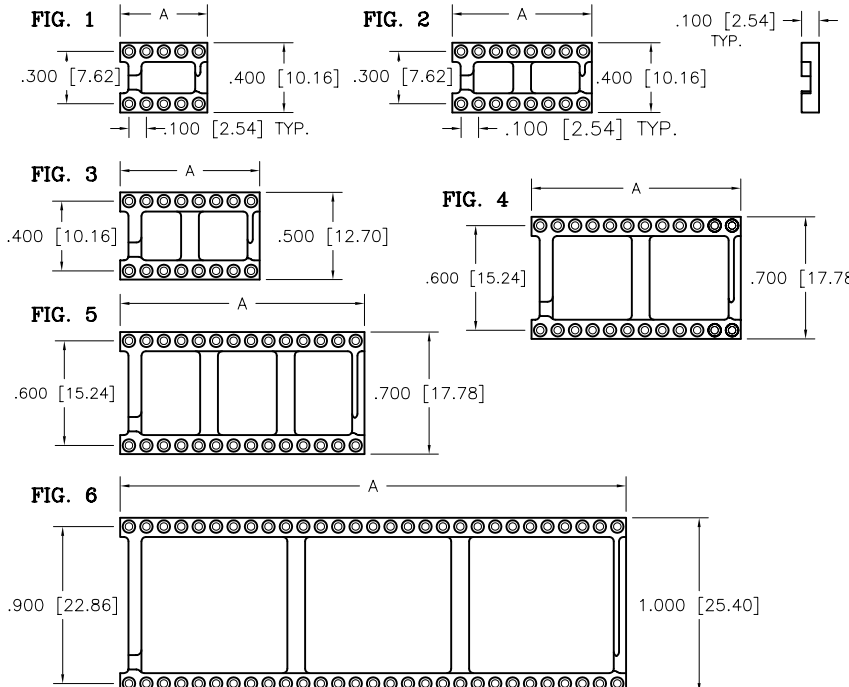
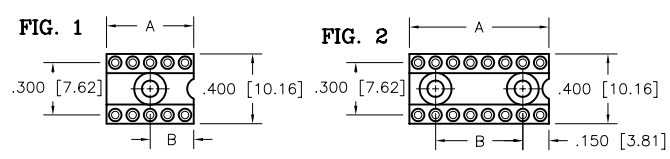


SERIES 110 OPEN FRAME WAFER CHART			
	PIN	DIM "A"	
FIG. 1	6	.300 [7.62]	306
	8	.400 [10.16]	308
	10	.500 [12.70]	310
FIG. 2	14	.700 [17.78]	314
	16	.800 [20.32]	316
	18	.900 [22.86]	318
	20	1.000 [25.40]	320
	22	1.100 [27.94]	322
	24	1.200 [30.48]	324
FIG. 3	28	1.400 [35.56]	328
	16	.800 [20.32]	416
FIG. 4	22	1.100 [27.94]	422
	24	1.200 [30.48]	424
FIG. 5	28	1.400 [35.56]	628
	30	1.500 [38.10]	630
	32	1.600 [40.64]	632
	36	1.800 [45.72]	636
FIG. 6	40	2.000 [50.80]	640
	48	2.400 [60.96]	648
	50	2.500 [63.50]	950
	52	2.600 [66.04]	952
	64	3.200 [81.28]	964

TERMINAL	A		B		C		D	
-60	.768	19.50	.118	3.00	.886	22.50	.028	0.71
-61	1.161	29.50	.118	3.00	1.280	32.50	.028	0.71
-62	.551	14.00	.118	3.00	.669	17.00	.020	0.51
-63	.807	20.50	.118	3.00	.925	23.50	.028	0.71
-65	.512	13.00	.118	3.00	.630	16.00	.018	.046
-80	.236	6.00	.126	3.20	.362	9.20	.024	0.60
-82	1.004	25.50	.118	3.00	1.122	28.50	.018	0.46
-84	.307	7.80	.126	3.20	.433	11.00	.024	0.60
-85	.354	9.00	.126	3.20	.480	12.20	.024	0.60
-87	.433	11.00	.118	3.00	.551	14.00	.028	0.71



SERIES 211 SOLID FRAME WAFER CHART				
	PIN	DIM "A"	DIM "B"	
FIG. 1	6	.300 [7.62]	.150 [3.81]	306
	8	.400 [10.16]	.200 [5.08]	308
	10	.500 [12.70]	.250 [6.35]	310
FIG. 2	14	.700 [17.78]	.400 [10.16]	314
	16	.800 [20.32]	.500 [12.70]	316
	18	.900 [22.86]	.600 [15.24]	318
	20	1.000 [25.40]	.700 [17.78]	320
	24	1.200 [30.48]	.900 [22.86]	324
	16	.800 [20.32]	.500 [12.70]	416
FIG. 3	22	1.100 [27.94]	.800 [20.32]	422
	24	1.200 [30.48]	.900 [22.86]	424
FIG. 4	24	1.200 [30.48]		624
	28	1.400 [35.56]		628
	30	1.500 [38.10]		630
	32	1.600 [40.64]		632
	36	1.800 [45.72]	1.650 [41.91]	636
	40	2.000 [50.80]	1.650 [41.91]	640

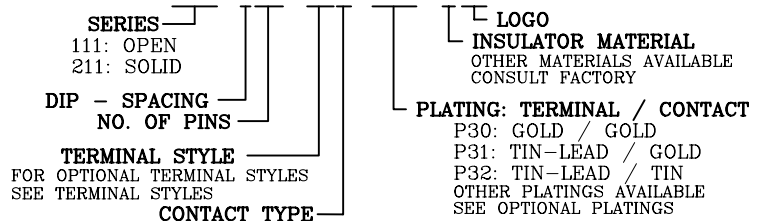


**CONTACT TYPE**

<b>S: STANDARD DIP</b>	INSERTION FORCE	9.0 oz. AVG.
	WITHDRAWAL FORCE	2.0 oz. MIN.
<b>M: STANDARD PGA</b>	INSERTION FORCE	1.6 oz. MAX.
	WITHDRAWAL FORCE	0.5 oz. MIN.
<b>L: INTERSTITIAL PGA</b>	INSERTION FORCE	1.0 oz. MAX.
	WITHDRAWAL FORCE	0.3 oz. MIN.
<b>H: HIGH FORCE</b>	INSERTION FORCE	18.3 oz. MAX.
	WITHDRAWAL FORCE	4.2 oz. MIN.

**ORDERING INFORMATION**

111-XXX-XXX-PXX-B12  
 211-XXX-XXX-PXX-B10



**TECHNICAL SPECIFICATIONS**

<b>MATERIAL INSULATOR</b>	GLASS FILLED POLYESTER UL 94V-0 LISTED
<b>TERMINAL CONTACT</b>	BRASS PER ASTM-B16 BeCu PER ASTM-B194
<b>OPERATING TEMP.</b>	-65°C TO +125°C
<b>CONTACT FORCES</b>	
<b>INSERTION</b>	STANDARD 9 oz. AVG.
<b>WITHDRAWAL</b>	STANDARD 2 oz. MIN.

©ANDON 2007 DIMENSIONS ARE SHOWN IN INCHES [MILLIMETERS].

WE RESERVE THE RIGHT TO CHANGE SPECIFICATIONS WITHOUT NOTICE.